

■
Drilling
Screw driving
Deburring

REMS Helix VE

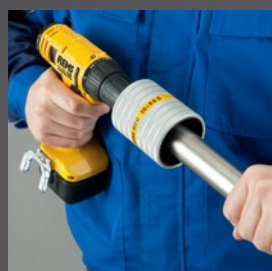


NEW

REMS

for Professionals

Drilling, screw driving and deburring.



REMS TECHNOLOGY
LI-ION PLUS



REMS Helix VE – drilling, screw driving and deburring

REMS Helix VE is a powerful, handy cordless power drill/screwdriver for drilling, driving or loosening screws and deburring pipes. The low weight of only 1.3 kg and the ergonomically designed housing with optimum weight distribution enables continuous one-hand operation. REMS Helix VE can be used everywhere, free hand, overhead, also in very confined spaces and is therefore ideal for assembly, disassembly and repair work.

- 1** Drive unit with battery pack weighs only 1.3 kg.
- 2** Keyless quick chuck, clamping range 0.8–10 mm.
- 3** 2 continuously adjustable speed ranges from 0–300 rpm and 0–1,250 rpm. High torque of 31 Nm in the low speed range for powerful screw driving.
- 4** 25 torque stages plus drilling stage.
- 5** **Drive**
Powerful electro-mechanical drive with powerful battery motor 14.4 V, 300 W output, robust, 2-step, precision, ball bearing-mounted planetary gear, maintenance-free. Safety switch.
- 6** **Vario Electronics**
Continuous electronic speed control for gentle start drilling, driving in/loosening of screws and selection of the speed suitable for the material when drilling and driving in/loosening screws.

The speed can be continuously controlled by variable pressure on the safety switch from 0 to 300 or 0 to 1,250 rpm (accelerator switch).
- 7** Right and left-hand rotation.
- 8** Integrated LED work light for illuminating the work place.
- 9** Belt clip.
- 10** **Li-Ion PLUS Technology.**
Highly resistant Li-Ion 14.4 V batteries with 1.6 or 3.2 Ah capacity for long service life. Powerful and light. Li-Ion 14.4 V, 3.2 Ah battery for driving in more than 1,000 screws 4 x 40 mm in wood. Total discharge and overload protection with single cell monitoring. Temperature monitoring during the charging process. Operating temperature range –10 to +60 °C. No memory effect for maximum battery power.
- 11** Rapid charger for short charging times.
- 12** Li-Ion 230 V voltage supply for mains operation instead of Li-Ion 14.4 V battery, as accessory.
- 13** **Outside/inside pipe deburrer**
REMS REG 10–54 E and REMS REG 10–42, see accessories.
- 14** **REMS tile drill**
Diamond-tipped dry drilling crowns for fast, clean drilling in all types of tiles, see accessories.

REMS Helix VE



REMS Helix VE Li-Ion Set Cordless power drill/screwdriver with Vario-Electronics (VE) for drilling in steel, stone, $\varnothing \leq 10$ mm, wood $\varnothing \leq 28$ mm and other materials and for driving in/loosening screws $\varnothing \leq 7$ mm. Drive unit with keyless quick chuck, clamping range 0.8–10 mm, right and left-hand rotation. Electromechanical drive with powerful battery motor 14.4 V, 300 W, 2-step robust planetary gear. 2 continuously adjustable speed ranges from 0 to 300 rpm and 0 to 1,250 rpm, 25 torque stages plus drilling stage, high torque of 31 Nm in the low speed range. Safety switch. Integrated LED work light. Belt clip. Li-Ion 14.4 V, 1,6 Ah battery, Li-Ion/Ni-Cd 230 V, 50–60 Hz, 65 W rapid charger. 1 bit with double blade slot/cross-head, 50 mm long. In carrying bag.

Art. No. 190010

Accessories



Bit set

comprising quick-change bit holder, magnetic, with automatic bit lock, 12 bits (4 Torx, 3 cross-head PH, 3 cross-head PZ, 2 slotted), in practical magazine with elastic band for fixing to wrist or to the power drill/screwdriver.

Art. No. 190051

REMS tile drill set 6-8-10

Diamond-tipped dry drilling crowns for fast, clean drilling in all types of tiles, e.g. ceramic, fine clay, granite, marble. 3 tile drills \varnothing 6, 8, 10 mm, start drilling aid with vacuum attachment.

Art. No. 181700



REMS tile drill \varnothing 5 mm

Art. No. 181710

REMS tile drill \varnothing 6 mm

Art. No. 181711

REMS tile drill \varnothing 8 mm

Art. No. 181712

REMS tile drill \varnothing 10 mm

Art. No. 181713

REMS tile drill \varnothing 12 mm

Art. No. 181714

REMS tile drill \varnothing 14 mm

Art. No. 181715

REMS REG 10–54 E

Outside/inside pipe deburrer for pipes \varnothing 10–54 mm, \varnothing $\frac{1}{2}$ –2 $\frac{1}{8}$ "

Art. No. 113835

Driver for REMS REG 10–42

Art. No. 113815

REMS REG 10–42

Outside/inside pipe deburrer for pipes \varnothing 10–42 mm, \varnothing $\frac{1}{2}$ –1 $\frac{5}{8}$ "

Art. No. 113810

Battery Li-Ion 14.4 V, 1.6 Ah

Art. No. 571545

Battery Li-Ion 14.4 V, 3.2 Ah

Art. No. 571555

Rapid charger Li-Ion/Ni-Cd 230 V, 50–60 Hz, 65 W

Art. No. 571560

Power supply Li-Ion 230 V

for mains operation instead of battery Li-Ion 14.4 V

Art. No. 571565



11

12

Sale through specialist dealers.



REMS (UK) Ltd.

Unit 5 · Ash Industrial Estate
Flex Meadow · Harlow · Essex CM19 5TJ
Phone +44 12 79 41 36 98
Fax +44 12 79 41 37 04
www.rems.de · GBR@rems.de